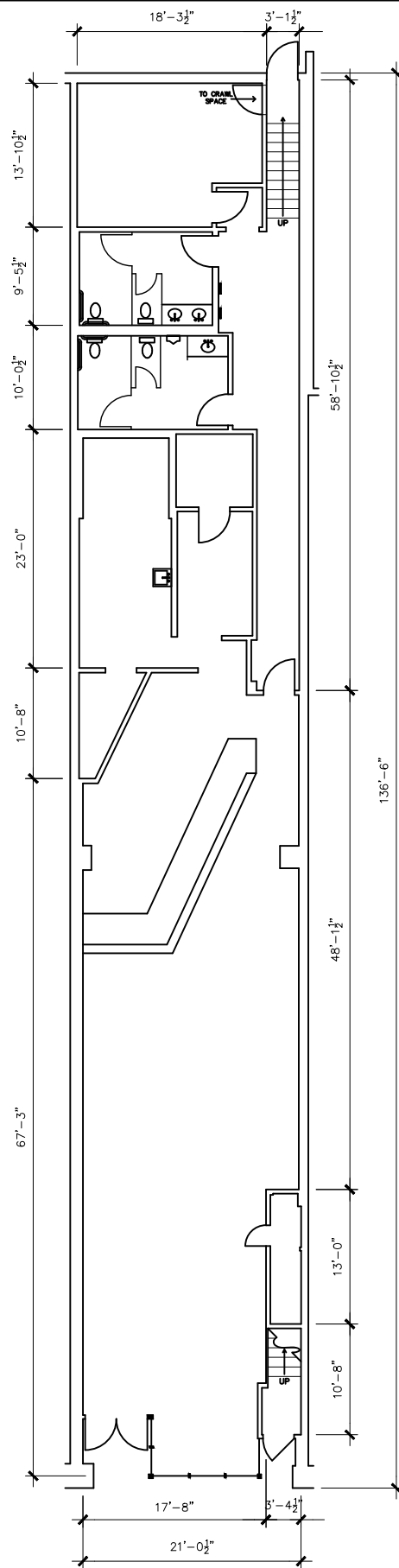
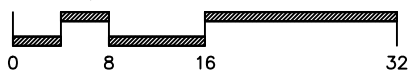


NOTE:

DIMENSIONS ARE TO SHOW ROOM SIZES.
 SQUARE FOOTAGE CALCULATIONS ARE DONE
 TO BOMA STANDARDS.



SCALE: 1/16" = 1'-0"



Drawing for:
 Mesco Enterprises
 1400 Westinghouse Rd.
 #3616
 Georgetown, TX 78626

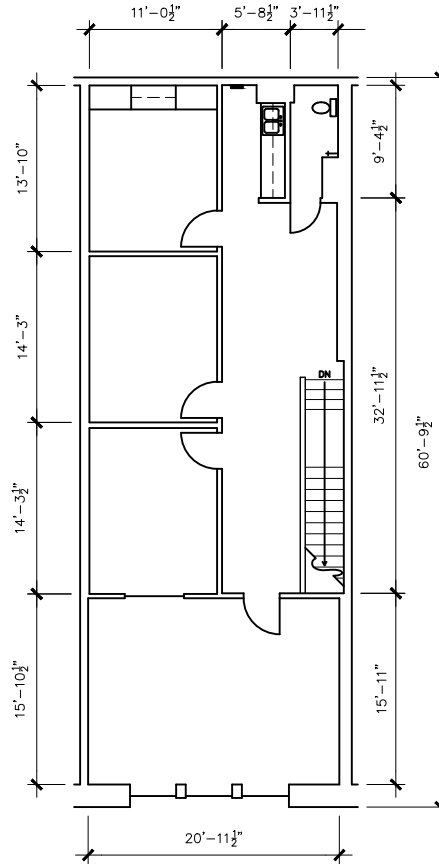
FIRST FLOOR
 704 CONGRESS AVE.
 AUSTIN, TEXAS
 EXTERIOR GROSS AREA: 4,527 S.F.

THE MEASUREMENTS, FLOOR PLANS,
 AND CALCULATIONS ARE ACCURATE
 USING BOMA MEASUREMENT
 STANDARDS.
 ANSI/BOMA Z85.3 - 2018
 GROSS 1 - LEASING METHOD
 Project No.: 2125.17
 Date: April 15, 2021
 © 2021

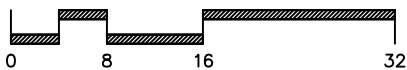
DIMENSIONS
 FLOOR PLANS
 Austin, Texas
 dimensionsfloorplans.com
 Phone: (512)342-0114

NOTE:

DIMENSIONS ARE TO SHOW ROOM SIZES.
SQUARE FOOTAGE CALCULATIONS ARE DONE
TO BOMA STANDARDS.



SCALE: 1/16" = 1'-0"



Drawing for:
Mesco Enterprises
1400 Westinghouse Rd.
#3616
Georgetown, TX 78626

SECOND FLOOR
704 CONGRESS AVE.
AUSTIN, TEXAS
EXTERIOR GROSS AREA: 4,527 S.F.

THE MEASUREMENTS, FLOOR PLANS,
AND CALCULATIONS ARE ACCURATE
USING BOMA MEASUREMENT
STANDARDS.
ANSI/BOMA Z85.3 - 2018
GROSS 1 - LEASING METHOD
Project No.: 2125.17
Date: April 15, 2021
© 2021

†DIMENSIONS†
FLOOR PLANS
Austin, Texas
dimensionsfloorplans.com
Phone: (512)342-0114